

Site DG001

Site Details

Reference	DG001
Settlement	Denham Green (village)
Conclusion	Not grey belt



Map data © Copyright Buckinghamshire Council (2025) Licence No. 0100062456. Imagery source (imagery used 2025 (note- image source does not state the date the image was taken): Earthstar Geographics, Esri UK, Esri, TomTom, Garmin, FAO, NOAA, USGS, Esri UK, Esri, TomTom, Garmin, GeoTechnologies, Inc, METI/NASA, USGS.

Assessment

Purpose A	None: No notable contribution
Purpose B	None: No notable contribution.
Purpose D	None: No notable contribution
National Landscape (NL)	Unconstrained: Not within the NL

Flood risk	Constrained: More than 50% within fluvial flood risk zone 2. Closely associated with a river corridor and the area outside the flood zone comprises woodland including ancient woodland.
Biodiversity	N/a: Already ruled out (FR)
Irreplaceable habitat	N/a: Already ruled out (FR)
Local Green Space	Unconstrained: Not LGS
Historic environment	N/a: Already ruled out (FR)
NL setting	N/a: Already ruled out (FR)
Conclusion	Not grey belt due to footnote 7 constraint (FR)

Site DG002

Site Details

Reference	DG002
Settlement	Denham Green (village)
Conclusion	Not grey belt



Map data © Copyright Buckinghamshire Council (2025) Licence No. 0100062456. Imagery source (imagery used 2025 (note- image source does not state the date the image was taken): Earthstar Geographics, Esri UK, Esri, TomTom, Garmin, FAO, NOAA, USGS, Esri UK, Esri, TomTom, Garmin, GeoTechnologies, Inc, METI/NASA, USGS.

Assessment

Purpose A	None: No notable contribution
Purpose B	None: No notable contribution.
Purpose D	None: No notable contribution
National Landscape (NL)	Unconstrained: Not within the NL
Flood risk	Unconstrained (marginal): Significant surface water flood risk.

Biodiversity	Constrained: Adjacent to the Mid Colne Valley SSSI.
Irreplaceable habitat	N/a: Already ruled out (BD)
Local Green Space	Unconstrained: Not LGS
Historic environment	N/a: Already ruled out (BD)
NL setting	N/a: Already ruled out (BD)
Conclusion	Not grey belt due to footnote 7 constraint (BD)

Site DG003

Site Details

Reference	DG003
Settlement	Denham Green (village)
Conclusion	Not grey belt



Assessment

Purpose A	None: No notable contribution
Purpose B	None: No notable contribution.
Purpose D	None: No notable contribution
National Landscape (NL)	Unconstrained: Not within the NL
Flood risk	Constrained: Largely within a fluvial flood risk zone albeit mainly zone 2.

Biodiversity	N/a: Already ruled out (FR)
Irreplaceable habitat	N/a: Already ruled out (FR)
Local Green Space	Unconstrained: Not LGS
Historic environment	N/a: Already ruled out (FR)
NL setting	N/a: Already ruled out (FR)
Conclusion	Not grey belt due to footnote 7 constraint (FR)

Site DG004

Site Details

Reference	DG004
Settlement	Denham Green (village)
Conclusion	Provisional grey belt



Map data © Copyright Buckinghamshire Council (2025) Licence No. 0100062456. Imagery source (imagery used 2025 (note- image source does not state the date the image was taken): Earthstar Geographics, Esri UK, Esri, TomTom, Garmin, FAO, NOAA, USGS, Esri UK, Esri, TomTom, Garmin, GeoTechnologies, Inc, METI/NASA, USGS.

Assessment

Purpose A	None: No notable contribution
Purpose B	None: No notable contribution.
Purpose D	None: No notable contribution
National Landscape (NL)	Unconstrained: Not within the NL
Flood risk	Unconstrained: No notable constraint

Biodiversity	Provisionally constrained: Around 300m from Mid Colne Valley SSSI, but downstream and in the context of existing built form. Also, it is not clear that the SSSI is easily accessible from this direction. Another consideration is recent construction of the Mid Colne Valley viaduct nearby, which has impacted the SSSI.
Irreplaceable habitat	Unconstrained: No notable constraint
Local Green Space	Unconstrained: Not LGS
Historic environment	Provisionally constrained: An important cluster of assets including a grade 1 listed building a scheduled monument is nearby. The AA likely shares a character area with the assets, namely the River Colne corridor.
NL setting	Unconstrained: Distant from the NL (beyond 2km)
Conclusion	Provisional grey belt due to footnote 7 constraint (BD, HE)

Site DG005

Site Details

Reference	DG005
Settlement	Denham Green (village)
Conclusion	Provisional grey belt



Map data © Copyright Buckinghamshire Council (2025) Licence No. 0100062456. Imagery source (imagery used 2025 (note- image source does not state the date the image was taken): Earthstar Geographics, Esri UK, Esri, TomTom, Garmin, FAO, NOAA, USGS, Esri UK, Esri, TomTom, Garmin, GeoTechnologies, Inc, METI/NASA, USGS.

Assessment

Purpose A	None: No notable contribution
Purpose B	None: No notable contribution.
Purpose D	None: No notable contribution
National Landscape (NL)	Unconstrained: Not within the NL
Flood risk	Unconstrained: No notable constraint

Biodiversity	Provisionally constrained: Around 250m from a SSSI but includes significant built form.
Irreplaceable habitat	Unconstrained: No notable constraint
Local Green Space	Unconstrained: Not LGS
Historic environment	Unconstrained (marginal): Adjacent to a grade 2 registered park and garden but separated by the A412 and includes significant built form. Not likely to contribute significantly to the setting of the RPG.
NL setting	Unconstrained: Distant from the NL (beyond 2km)
Conclusion	Provisional grey belt due to footnote 7 constraint (BD)

Site DG006

Site Details

Reference	DG006
Settlement	Denham Green (village)
Conclusion	Not grey belt



Map data © Copyright Buckinghamshire Council (2025) Licence No. 0100062456. Imagery source (imagery used 2025 (note- image source does not state the date the image was taken): Earthstar Geographics, Esri UK, Esri, TomTom, Garmin, FAO, NOAA, USGS, Esri UK, Esri, TomTom, Garmin, GeoTechnologies, Inc, METI/NASA, USGS.

Assessment

Purpose A	None: No notable contribution
Purpose B	Weak: The AA comprises a substantial part of the gap between Chalfont St. Peter / Gerrards Cross and London but makes very limited contribution to appreciation of the gap. The gap is sensitive on account of washed over built form and major road corridors (also the train line), but the AA is not associated with the main connecting road corridors (but is adjacent to the train line). The AA comprises an important area of open land, but a much more significant part of the gap is located to the east (the Colne Valley).
Purpose D	None: No notable contribution

National Landscape (NL)	Unconstrained: Not within the NL
Flood risk	Unconstrained: No notable constraint
Biodiversity	Constrained: Near adjacent to Old Rectory Meadows SSSI.
Irreplaceable habitat	N/a: Already ruled out (BD)
Local Green Space	Unconstrained: Not LGS
Historic environment	N/a: Already ruled out (BD)
NL setting	N/a: Already ruled out (BD)
Conclusion	Not grey belt due to footnote 7 constraint (BD)

Site DG007

Site Details

Reference	DG007
Settlement	Denham Green (village)
Conclusion	Provisional grey belt



Map data © Copyright Buckinghamshire Council (2025) Licence No. 0100062456. Imagery source (imagery used 2025 (note- image source does not state the date the image was taken): Earthstar Geographics, Esri UK, Esri, TomTom, Garmin, FAO, NOAA, USGS, Esri UK, Esri, TomTom, Garmin, GeoTechnologies, Inc, METI/NASA, USGS.

Assessment

Purpose A	None: No notable contribution
Purpose B	None: No notable contribution.
Purpose D	None: No notable contribution
National Landscape (NL)	Unconstrained: Not within the NL
Flood risk	Unconstrained: No notable constraint

Biodiversity	Provisionally constrained: Around 250m from a SSSI but no road or walking connectivity given an intervening railway. Does not include any priority habitat, but does include a recently dug small reservoir and recently developed scrub. Surface water flood zones suggest limited or no hydrological connectivity.
Irreplaceable habitat	Unconstrained: No notable constraint
Local Green Space	Unconstrained: Not LGS
Historic environment	Unconstrained: Around 150m from a grade 2 registered park and garden.
NL setting	Unconstrained: Distant from the NL (beyond 2km)
Conclusion	Provisional grey belt due to footnote 7 constraint (BD)

Site DG008

Site Details

Reference	DG008
Settlement	Denham Green (village)
Conclusion	Not grey belt



Assessment

Purpose A	None: No notable contribution
Purpose B	None: No notable contribution.
Purpose D	None: No notable contribution
National Landscape (NL)	Unconstrained: Not within the NL
Flood risk	Unconstrained: No notable constraint

Biodiversity	Constrained: Adjacent to the Mid Colne Valley SSSI and includes significant ancient woodland.
Irreplaceable habitat	N/a: Already ruled out (BD)
Local Green Space	Unconstrained: Not LGS
Historic environment	N/a: Already ruled out (BD)
NL setting	N/a: Already ruled out (BD)
Conclusion	Not grey belt due to footnote 7 constraint (BD)

Site EW001

Site Details

Reference	EW001
Settlement	Eton Wick (village)
Conclusion	Not grey belt



Assessment

Purpose A	None: No notable contribution
Purpose B	Strong: The AA comprises a substantial part of the gap between Maidenhead and Windsor and makes a significant contribution to appreciation of the gap. However, extensive flood risk would serve to restrict development.
Purpose D	None: No notable contribution
National Landscape (NL)	Unconstrained: Not within the NL

Flood risk	Constrained: Largely fluvial flood risk zone although a large AA with notable areas outside of the flood zone.
Biodiversity	N/a: Already ruled out (FR)
Irreplaceable habitat	N/a: Already ruled out (FR)
Local Green Space	Unconstrained: Not LGS
Historic environment	N/a: Already ruled out (FR)
NL setting	N/a: Already ruled out (FR)
Conclusion	Not grey belt as the AA both makes a strong contribution to one or more of the relevant Green Belt purposes and is subject to footnote 7 constraint.

Site FC001

Site Details

Reference	FC001
Settlement	Farnham Common (town)
Conclusion	Not grey belt



Map data © Copyright Buckinghamshire Council (2025) Licence No. 0100062456. Imagery source (imagery used 2025 (note- image source does not state the date the image was taken): Earthstar Geographics, Esri UK, Esri, TomTom, Garmin, FAO, NOAA, USGS, Esri UK, Esri, TomTom, Garmin, GeoTechnologies, Inc, METI/NASA, USGS.

Assessment

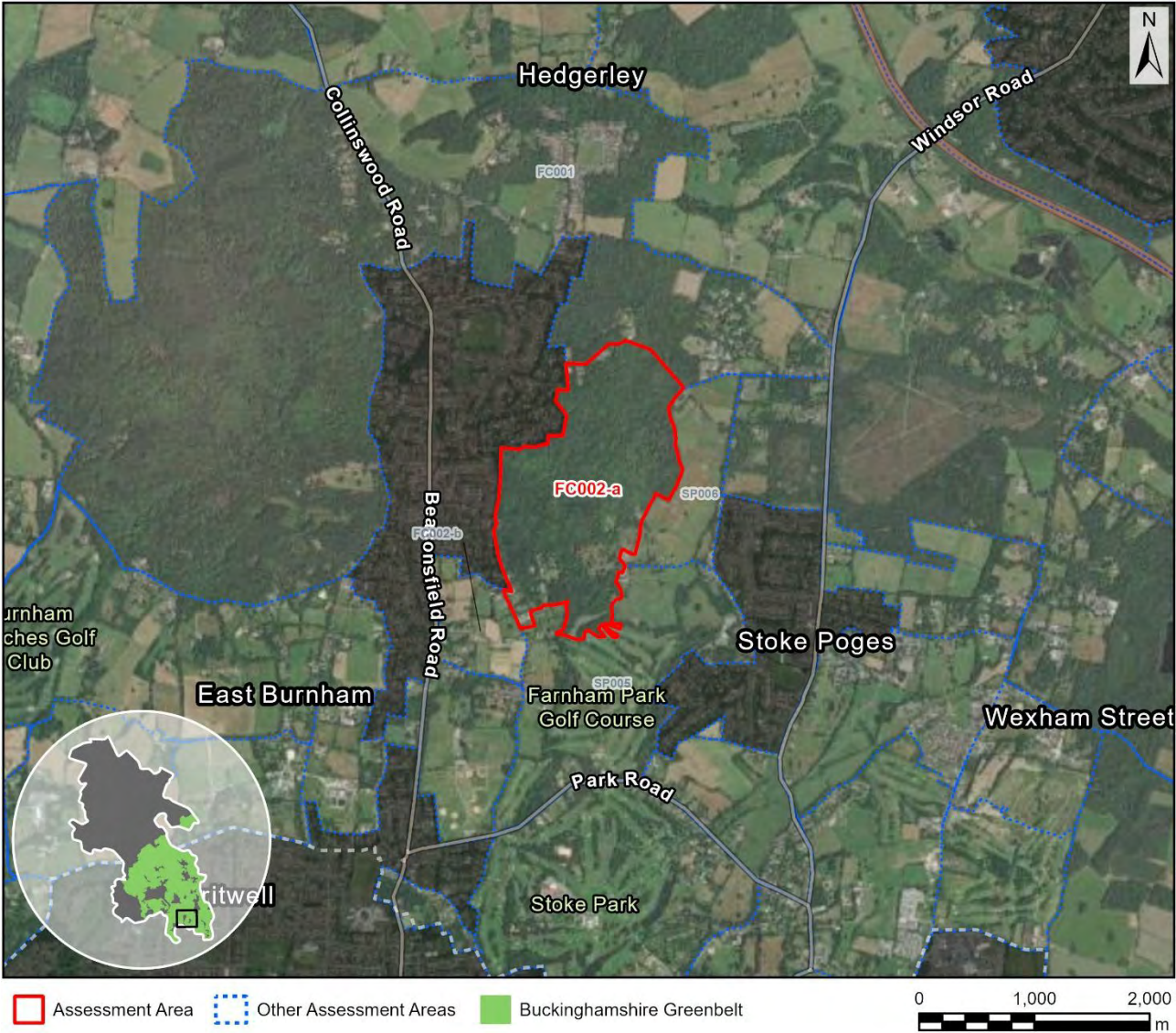
Purpose A	None: No notable contribution
Purpose B	Moderate: The AA comprises a substantial part of the gap between Beaconsfield / Gerrards Cross and Farnham Common / Slough but makes limited contribution to appreciation of the gap. There is extensive onsite woodland and the broader landscape is also heavily wooded and more broadly constrained.
Purpose D	None: No notable contribution

National Landscape (NL)	Unconstrained: Not within the NL
Flood risk	Unconstrained: No notable constraint
Biodiversity	Constrained: Adjacent to Burnham Beeches and includes significant habitat.
Irreplaceable habitat	N/a: Already ruled out (BD)
Local Green Space	Unconstrained: Not LGS
Historic environment	N/a: Already ruled out (BD)
NL setting	N/a: Already ruled out (BD)
Conclusion	Not grey belt due to footnote 7 constraint (BD)

Site FC002-a

Site Details

Reference	FC002-a
Settlement	Farnham Common (town)
Conclusion	Not grey belt



Assessment

Purpose A	None: No notable contribution
Purpose B	None: No notable contribution.
Purpose D	None: No notable contribution
National Landscape (NL)	Unconstrained: Not within the NL
Flood risk	Unconstrained: No notable constraint

Biodiversity	Provisionally constrained: Comprises an ancient woodland in proximity to both Burnham Beeches and Stoke Common SSSI, with the latter under 500m distant. Burnham Beeches is separated by Farnham Common.
Irreplaceable habitat	Constrained: Comprises ancient woodland.
Local Green Space	Unconstrained: Not LGS
Historic environment	N/a: Already ruled out (IH)
NL setting	N/a: Already ruled out (IH)
Conclusion	Not grey belt due to footnote 7 constraint (IH)

Site FC002-b

Site Details

Reference	FC002-b
Settlement	Farnham Common (town)
Conclusion	Not grey belt



Assessment

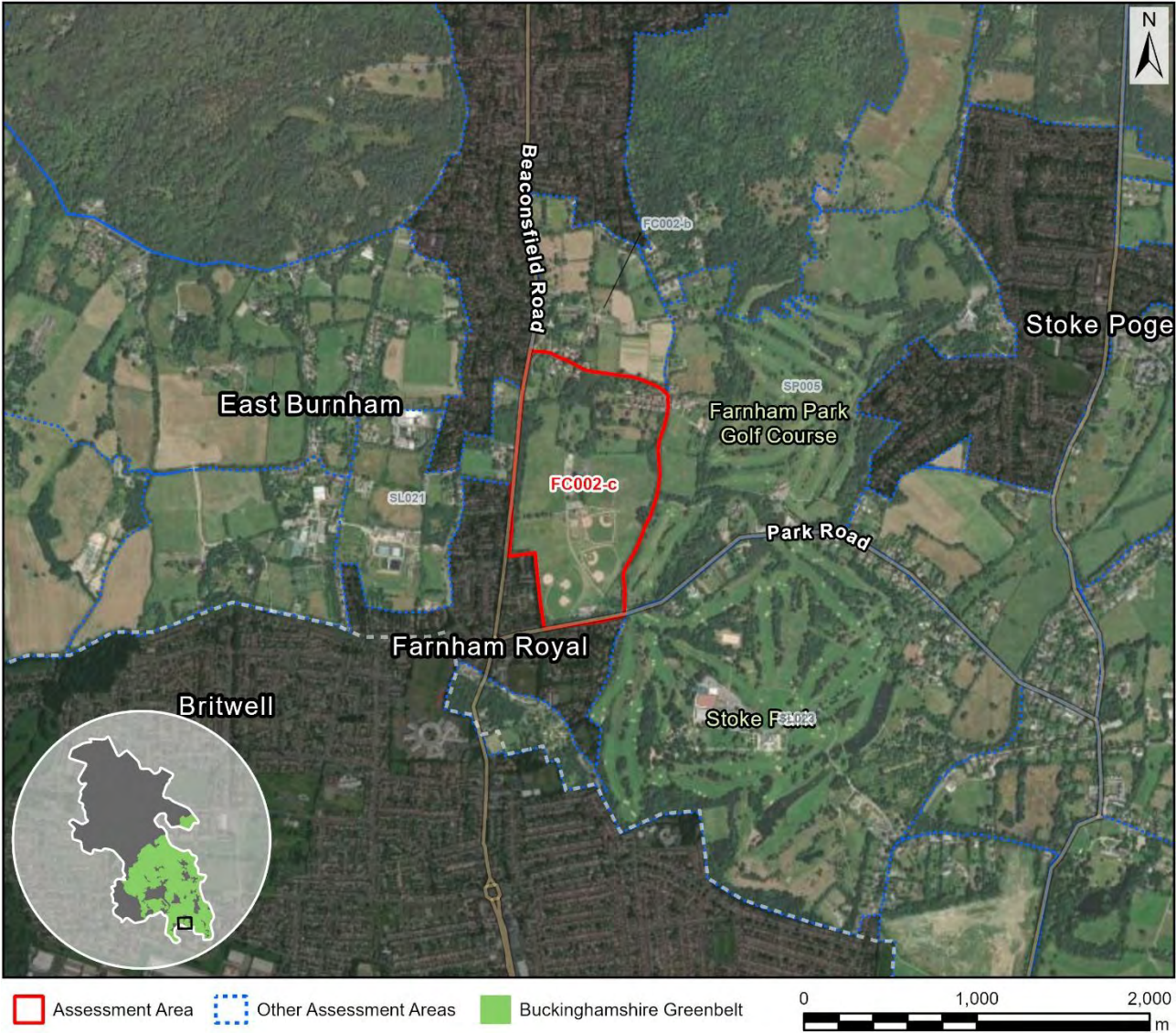
Purpose A	None: No notable contribution
Purpose B	None: No notable contribution.
Purpose D	None: No notable contribution
National Landscape (NL)	Unconstrained: Not within the NL
Flood risk	Unconstrained: No notable constraint

Biodiversity	Constrained: Within 400m of Burnham Beeches albeit separated by Farnham Common.
Irreplaceable habitat	N/a: Already ruled out (BD)
Local Green Space	Unconstrained: Not LGS
Historic environment	N/a: Already ruled out (BD)
NL setting	N/a: Already ruled out (BD)
Conclusion	Not grey belt due to footnote 7 constraint (BD)

Site FC002-c

Site Details

Reference	FC002-c
Settlement	Farnham Common (town)
Conclusion	Not grey belt



Map data © Copyright Buckinghamshire Council (2025) Licence No. 0100062456. Imagery source (imagery used 2025 (note- image source does not state the date the image was taken): Earthstar Geographics, Esri UK, Esri, TomTom, Garmin, FAO, NOAA, USGS, Esri UK, Esri, TomTom, Garmin, GeoTechnologies, Inc, METI/NASA, USGS.

Assessment

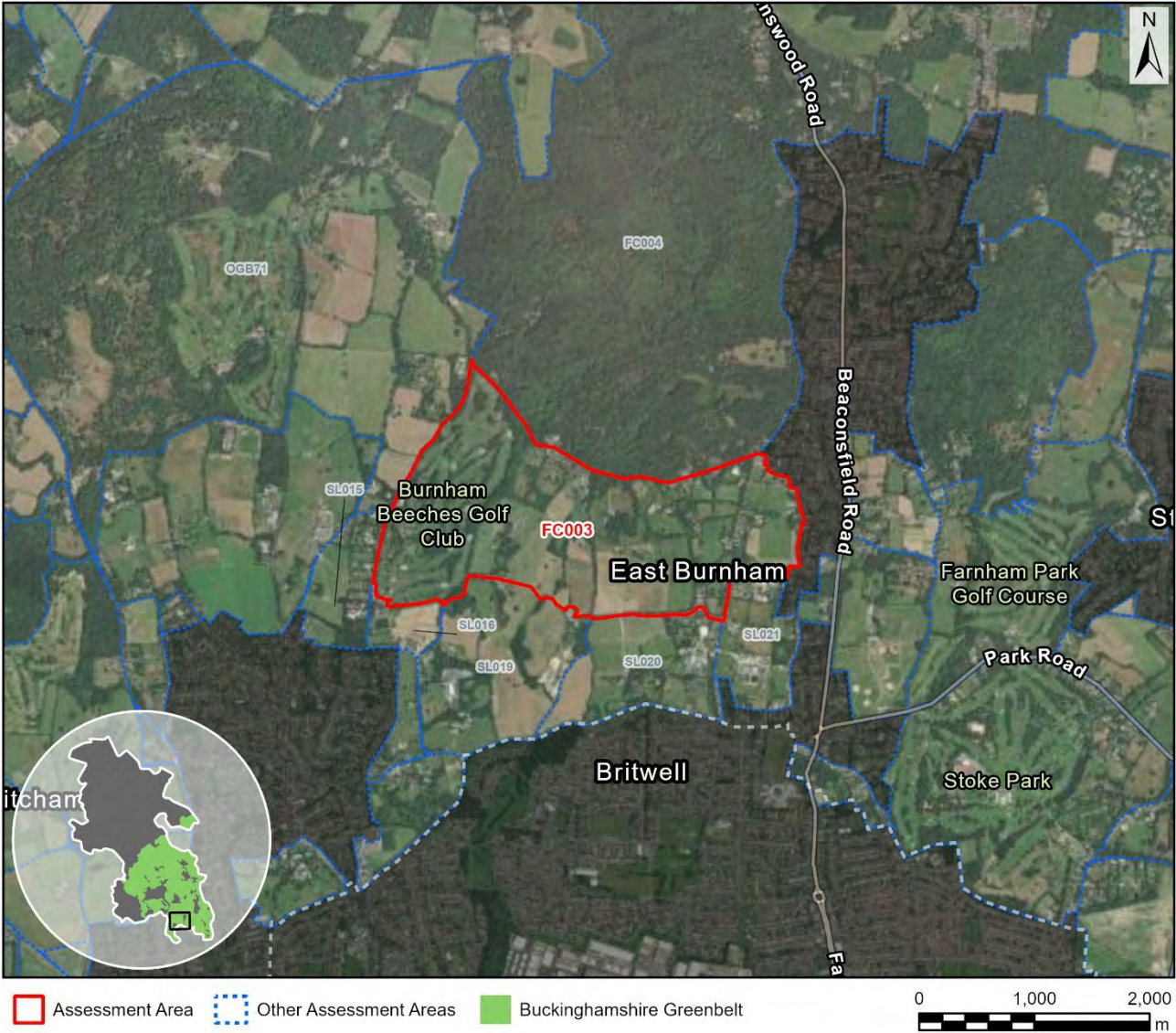
Purpose A	Moderate: Limited onsite built form but partially enclosed by existing development. The AA is contained by lanes.
Purpose B	Strong: The AA comprises a substantial part of the gap between Farnham Common and Farnham Royal / Slough and makes a significant contribution to appreciation of the gap. The AA comprises a park adjacent to the key road link.
Purpose D	None: No notable contribution

National Landscape (NL)	Unconstrained: Not within the NL
Flood risk	Unconstrained: No notable constraint
Biodiversity	Provisionally constrained: Around 650m from Burnham Beeches SAC at its closest point but separated by Farnham Common. The southern part that is most distant from the SAC comprises a public park, whilst in the northern area part of the land was formerly landscaped parkland or orchards, and retains important habitat accordingly.
Irreplaceable habitat	Unconstrained: No notable constraint
Local Green Space	Unconstrained: Not LGS
Historic environment	Provisionally constrained: The northern section is former parkland but not locally listed. Stoke Park is nearby but the AA likely contributes little to its setting.
NL setting	Unconstrained: Distant from the NL (beyond 2km)
Conclusion	Not grey belt as the AA makes a strong contribution to one or more of the relevant Green Belt purposes.

Site FC003

Site Details

Reference	FC003
Settlement	Farnham Common (town)
Conclusion	Not grey belt



Assessment

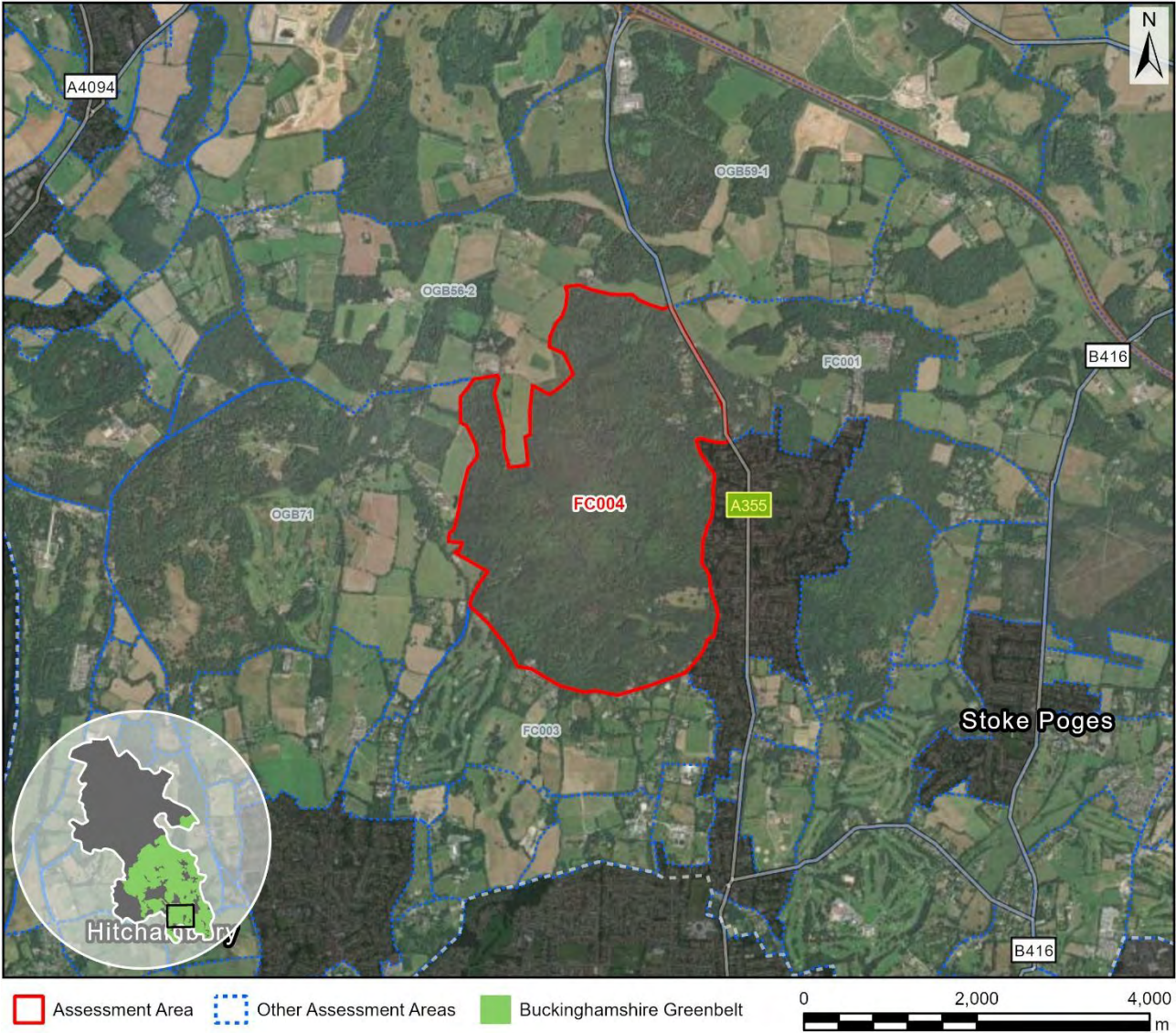
Purpose A	None: No notable contribution
Purpose B	None: No notable contribution.
Purpose D	None: No notable contribution
National Landscape (NL)	Unconstrained: Not within the NL
Flood risk	Unconstrained: No notable constraint

Biodiversity	Constrained: Adjacent to Burnham Beeches and includes some habitat.
Irreplaceable habitat	N/a: Already ruled out (BD)
Local Green Space	Unconstrained: Not LGS
Historic environment	N/a: Already ruled out (BD)
NL setting	N/a: Already ruled out (BD)
Conclusion	Not grey belt due to footnote 7 constraint (BD)

Site FC004

Site Details

Reference	FC004
Settlement	Farnham Common (town)
Conclusion	Not grey belt



Map data © Copyright Buckinghamshire Council (2025) Licence No. 0100062456. Imagery source (imagery used 2025 (note- image source does not state the date the image was taken): Earthstar Geographics, Esri UK, Esri, TomTom, Garmin, FAO, NOAA, USGS, Esri UK, Esri, TomTom, Garmin, GeoTechnologies, Inc, METI/NASA, USGS.

Assessment

Purpose A	None: No notable contribution
Purpose B	None: No notable contribution.
Purpose D	None: No notable contribution
National Landscape (NL)	Unconstrained: Not within the NL
Flood risk	Unconstrained: No notable constraint

Biodiversity	Constrained: Comprises Burnham Beeches.
Irreplaceable habitat	N/a: Already ruled out (BD)
Local Green Space	Unconstrained: Not LGS
Historic environment	N/a: Already ruled out (BD)
NL setting	N/a: Already ruled out (BD)
Conclusion	Not grey belt due to footnote 7 constraint (BD)

Site FH001

Site Details

Reference	FH001
Settlement	Flackwell Heath (town)
Conclusion	Not grey belt



Map data © Copyright Buckinghamshire Council (2025) Licence No. 0100062456. Imagery source (imagery used 2025 (note- image source does not state the date the image was taken): Earthstar Geographics, Esri UK, Esri, TomTom, Garmin, FAO, NOAA, USGS, Esri UK, Esri, TomTom, Garmin, GeoTechnologies, Inc, METI/NASA, USGS.

Assessment

Purpose A	None: No notable contribution
Purpose B	Moderate: The AA comprises a substantial part of the gap between Flackwell Heath and High Wycombe but makes limited contribution to appreciation of the gap. The AA comprises woodland associated with the developed plateau, and the AA is separated from High Wycombe by the M25 and woodland.
Purpose D	None: No notable contribution

National Landscape (NL)	Unconstrained: Not within the NL
Flood risk	Unconstrained: No notable constraint
Biodiversity	Unconstrained: No notable constraint
Irreplaceable habitat	Constrained: 72% ancient woodland plus wider priority habitat.
Local Green Space	Unconstrained: Not LGS
Historic environment	N/a: Already ruled out (IH)
NL setting	N/a: Already ruled out (IH)
Conclusion	Not grey belt due to footnote 7 constraint (IH)

Site FH002

Site Details

Reference	FH002
Settlement	Flackwell Heath (town)
Conclusion	Not grey belt



Map data © Copyright Buckinghamshire Council (2025) Licence No. 0100062456. Imagery source (imagery used 2025 (note- image source does not state the date the image was taken): Earthstar Geographics, Esri UK, Esri, TomTom, Garmin, FAO, NOAA, USGS, Esri UK, Esri, TomTom, Garmin, GeoTechnologies, Inc, METI/NASA, USGS.

Assessment

Purpose A	Moderate: Limited onsite built form but partially enclosed by existing development. The AA is mostly well contained but less well contained to the south east (woodland and a lane). It is noted that the effect of development would be to extend High Wycombe beyond the former train line and there would be a risk of merging with Flackwell Heath (but steep topography could help to maintain a buffer).
Purpose B	Strong: The AA comprises a substantial part of the gap between Flackwell Heath and High Wycombe and makes a significant contribution to appreciation of the gap. Development of the AA would risk a sense of the settlements having merged.

Purpose D	None: No notable contribution
National Landscape (NL)	Unconstrained: Not within the NL
Flood risk	Unconstrained: No notable constraint
Biodiversity	Provisionally constrained: Within SAC impact zone.
Irreplaceable habitat	Provisionally constrained: 2% ancient woodland and there is wider priority habitat, but this is a large AA with significant unconstrained areas. Adjacent to a large ancient woodland, but separated by a road with built form.
Local Green Space	Unconstrained: Not LGS
Historic environment	Provisionally constrained: Abuts the Flackwell Heath conservation area, but only marginally and this is a large AA (and the conservation area includes just one listed building). Another conservation area is located in the valley to the northeast but in the context of much modern built form. Footpaths cross the golf course.
NL setting	Unconstrained: 200-500m from the NL and considered unlikely to fall within the NL setting (not assessed in detail).
Conclusion	Not grey belt as the AA makes a strong contribution to one or more of the relevant Green Belt purposes.

Site FH003

Site Details

Reference	FH003
Settlement	Flackwell Heath (town)
Conclusion	Not grey belt



Map data © Copyright Buckinghamshire Council (2025) Licence No. 0100062456. Imagery source (imagery used 2025 (note- image source does not state the date the image was taken): Earthstar Geographics, Esri UK, Esri, TomTom, Garmin, FAO, NOAA, USGS, Esri UK, Esri, TomTom, Garmin, GeoTechnologies, Inc, METI/NASA, USGS.

Assessment

Purpose A	Strong: Limited onsite built form and only very partially enclosed by existing development. The AA is contained by lanes. In conclusion, judged strong given limited built form or urbanising influences, challenging containment and because development would be incongruous. This is steeply rising land that strongly marks the settlement edge, including noting a former train line, and there would be a risk of sprawl along the Wye valley.
Purpose B	Strong: The AA comprises a substantial part of the gap between Flackwell Heath and High Wycombe and makes a significant contribution to appreciation of the gap. Development of the AA would risk a sense of the settlements having merged, including noting the adjacent lanes.

Purpose D	None: No notable contribution
National Landscape (NL)	Unconstrained: Not within the NL
Flood risk	Unconstrained: No notable constraint
Biodiversity	Provisionally constrained: Within SAC impact zone.
Irreplaceable habitat	Unconstrained: No notable constraint
Local Green Space	Unconstrained: Not LGS
Historic environment	Unconstrained (marginal): The steep valley side somewhat in proximity to a series of conservation areas along the valley, but limited concerns accounting for topography and extensive modern built form surrounding the conservation areas. The AA does contribute strongly to long distance views across the valley which broadly has a strong heritage value. The AA is not accessible, with no public rights of way, although Juniper Lane at the western edge is a narrow historic lane and a cycle route.
NL setting	Unconstrained: 500-1000m from the NL and considered unlikely to fall within the NL setting (not assessed in detail).
Conclusion	Not grey belt as the AA makes a strong contribution to one or more of the relevant Green Belt purposes.

Site FH004

Site Details

Reference	FH004
Settlement	Flackwell Heath (town)
Conclusion	Provisional grey belt



Map data © Copyright Buckinghamshire Council (2025) Licence No. 0100062456. Imagery source (imagery used 2025 (note- image source does not state the date the image was taken): Earthstar Geographics, Esri UK, Esri, TomTom, Garmin, FAO, NOAA, USGS, Esri UK, Esri, TomTom, Garmin, GeoTechnologies, Inc, METI/NASA, USGS.

Assessment

Purpose A	None: No notable contribution
Purpose B	Moderate: The AA comprises a substantial part of the gap between Flackwell Heath and High Wycombe but makes limited contribution to appreciation of the gap. The AA comprises an important woodland marking the edge of Flackwell Heath, and there may be some visual connectivity with Wooburn Green (High Wycombe), but a substantial gap would remain were the AA to be developed.
Purpose D	None: No notable contribution

National Landscape (NL)	Unconstrained: Not within the NL
Flood risk	Unconstrained: No notable constraint
Biodiversity	Provisionally constrained: Within SAC impact zone.
Irreplaceable habitat	Unconstrained: No notable constraint
Local Green Space	Unconstrained: Not LGS
Historic environment	Unconstrained (marginal): Comprises a hanger woodland above the Wooburn Green Conservation Area, but at some distance.
NL setting	Unconstrained: 500-1000m from the NL and considered unlikely to fall within the NL setting (not assessed in detail).
Conclusion	Provisional grey belt due to footnote 7 constraint (BD)

Site FH005

Site Details

Reference	FH005
Settlement	Flackwell Heath (town)
Conclusion	Not grey belt



Map data © Copyright Buckinghamshire Council (2025) Licence No. 0100062456. Imagery source (imagery used 2025 (note- image source does not state the date the image was taken): Earthstar Geographics, Esri UK, Esri, TomTom, Garmin, FAO, NOAA, USGS, Esri UK, Esri, TomTom, Garmin, GeoTechnologies, Inc, METI/NASA, USGS.

Assessment

Purpose A	None: No notable contribution
Purpose B	Strong: The AA comprises a substantial part of the gap between Bourne End and makes a significant contribution to appreciation of the gap. This is a fragile gap, given washed over built form, and there is a brief view of open land within the AA from the adjacent lane. The western part of the AA forms part of a distinct dry valley, with a hanger woodland / former parkland adjacent to the west.
Purpose D	None: No notable contribution

National Landscape (NL)	Unconstrained: Not within the NL
Flood risk	Unconstrained: No notable constraint
Biodiversity	Provisionally constrained: Within SAC impact zone.
Irreplaceable habitat	Unconstrained: No notable constraint
Local Green Space	Unconstrained: Not LGS
Historic environment	Unconstrained: No notable constraint
NL setting	Unconstrained: 100-200m from the NL and considered unlikely to fall within the NL setting (not assessed in detail).
Conclusion	Not grey belt as the AA makes a strong contribution to one or more of the relevant Green Belt purposes.

Site FH006

Site Details

Reference	FH006
Settlement	Flackwell Heath (town)
Conclusion	Provisional grey belt



Map data © Copyright Buckinghamshire Council (2025) Licence No. 0100062456. Imagery source (imagery used 2025 (note- image source does not state the date the image was taken): Earthstar Geographics, Esri UK, Esri, TomTom, Garmin, FAO, NOAA, USGS, Esri UK, Esri, TomTom, Garmin, GeoTechnologies, Inc, METI/NASA, USGS.

Assessment

Purpose A	None: No notable contribution
Purpose B	Moderate: The AA comprises a substantial part of the gap between Flackwell Heath and Bourne End but makes limited contribution to appreciation of the gap. Whilst this is a narrow and fragile gap (given washed over built form), the AA appears not to be visible from the two lanes connecting the settlements, and there are no public footpaths nearby.
Purpose D	None: No notable contribution

National Landscape (NL)	Unconstrained: Not within the NL
Flood risk	Unconstrained: No notable constraint
Biodiversity	Provisionally constrained: Within SAC impact zone.
Irreplaceable habitat	Unconstrained: No notable constraint
Local Green Space	Unconstrained: Not LGS
Historic environment	Unconstrained: No notable constraint
NL setting	Unconstrained: 100-200m from the NL and considered unlikely to fall within the NL setting (not assessed in detail).
Conclusion	Provisional grey belt due to footnote 7 constraint (BD)

Site FH007

Site Details

Reference	FH007
Settlement	Flackwell Heath (town)
Conclusion	Provisional grey belt



Assessment

Purpose A	None: No notable contribution
Purpose B	Moderate: The AA comprises a substantial part of the gap between Flackwell Heath and Bourne End but makes limited contribution to appreciation of the gap. Whilst this is a narrow and fragile gap (given washed over built form), and a connecting lane is adjacent to the AA, a substantial gap would remain to the south. This is raised land but it is not clear that there is visual connectivity with lower land at the edge of Bourne End.
Purpose D	None: No notable contribution

National Landscape (NL)	Unconstrained: Not within the NL
Flood risk	Unconstrained: No notable constraint
Biodiversity	Provisionally constrained: Within SAC impact zone.
Irreplaceable habitat	Unconstrained: No notable constraint
Local Green Space	Unconstrained: Not LGS
Historic environment	Unconstrained: No notable constraint
NL setting	Provisionally constrained: Adjacent to the NL and assessed as within the NL setting.
Conclusion	Provisional grey belt due to footnote 7 constraint (BD, NLS)

Site FH008

Site Details

Reference	FH008
Settlement	Flackwell Heath (town)
Conclusion	Provisional grey belt



Assessment

Purpose A	None: No notable contribution
Purpose B	None: No notable contribution.
Purpose D	None: No notable contribution
National Landscape (NL)	Unconstrained: Not within the NL
Flood risk	Unconstrained: No notable constraint

Biodiversity	Provisionally constrained: Within SAC impact zone.
Irreplaceable habitat	Unconstrained: No notable constraint
Local Green Space	Unconstrained: Not LGS
Historic environment	Unconstrained: No notable constraint
NL setting	Provisionally constrained: Adjacent to the NL and assessed as within the NL setting.
Conclusion	Provisional grey belt due to footnote 7 constraint (BD, NLS)

Site FH009

Site Details

Reference	FH009
Settlement	Flackwell Heath (town)
Conclusion	Not grey belt



Assessment

Purpose A	None: No notable contribution
Purpose B	Weak: The AA comprises a small part of the gap between Flackwell Heath and Bourne End and makes very limited contribution to appreciation of the gap, although the adjacent lane is noted.
Purpose D	None: No notable contribution
National Landscape (NL)	Constrained: Within the NL

Flood risk	N/a: Already ruled out (NL)
Biodiversity	N/a: Already ruled out (NL)
Irreplaceable habitat	N/a: Already ruled out (NL)
Local Green Space	N/a: Already ruled out (NL)
Historic environment	N/a: Already ruled out (NL)
NL setting	N/a: Already ruled out (NL)
Conclusion	Not grey belt due to footnote 7 constraint (NL)

Site FH010

Site Details

Reference	FH010
Settlement	Flackwell Heath (town)
Conclusion	Not grey belt



Map data © Copyright Buckinghamshire Council (2025) Licence No. 0100062456. Imagery source (imagery used 2025 (note- image source does not state the date the image was taken): Earthstar Geographics, Esri UK, Esri, TomTom, Garmin, FAO, NOAA, USGS, Esri UK, Esri, TomTom, Garmin, GeoTechnologies, Inc, METI/NASA, USGS.

Assessment

Purpose A	None: No notable contribution
Purpose B	None: No notable contribution.
Purpose D	None: No notable contribution
National Landscape (NL)	Constrained: Within the NL
Flood risk	N/a: Already ruled out (NL)

Biodiversity	N/a: Already ruled out (NL)
Irreplaceable habitat	N/a: Already ruled out (NL)
Local Green Space	N/a: Already ruled out (NL)
Historic environment	N/a: Already ruled out (NL)
NL setting	N/a: Already ruled out (NL)
Conclusion	Not grey belt due to footnote 7 constraint (NL)

Site FH011

Site Details

Reference	FH011
Settlement	Flackwell Heath (town)
Conclusion	Not grey belt



Map data © Copyright Buckinghamshire Council (2025) Licence No. 0100062456. Imagery source (imagery used 2025 (note- image source does not state the date the image was taken): Earthstar Geographics, Esri UK, Esri, TomTom, Garmin, FAO, NOAA, USGS, Esri UK, Esri, TomTom, Garmin, GeoTechnologies, Inc, METI/NASA, USGS.

Assessment

Purpose A	None: No notable contribution
Purpose B	None: No notable contribution.
Purpose D	None: No notable contribution
National Landscape (NL)	Constrained: Within the NL
Flood risk	N/a: Already ruled out (NL)

Biodiversity	N/a: Already ruled out (NL)
Irreplaceable habitat	N/a: Already ruled out (NL)
Local Green Space	N/a: Already ruled out (NL)
Historic environment	N/a: Already ruled out (NL)
NL setting	N/a: Already ruled out (NL)
Conclusion	Not grey belt due to footnote 7 constraint (NL)

Site FH012

Site Details

Reference	FH012
Settlement	Flackwell Heath (town)
Conclusion	Not grey belt



Assessment

Purpose A	None: No notable contribution
Purpose B	None: No notable contribution.
Purpose D	None: No notable contribution
National Landscape (NL)	Constrained: Within the NL
Flood risk	N/a: Already ruled out (NL)

Biodiversity	N/a: Already ruled out (NL)
Irreplaceable habitat	N/a: Already ruled out (NL)
Local Green Space	N/a: Already ruled out (NL)
Historic environment	N/a: Already ruled out (NL)
NL setting	N/a: Already ruled out (NL)
Conclusion	Not grey belt due to footnote 7 constraint (NL)

Site FH013-a

Site Details

Reference	FH013-a
Settlement	Flackwell Heath (town)
Conclusion	Not grey belt



Assessment

Purpose A	None: No notable contribution
Purpose B	Weak: The AA comprises a small part of the gap between Flackwell Heath and High Wycombe and makes very limited contribution to appreciation of the gap. The AA is screened from Heath End Road.
Purpose D	None: No notable contribution
National Landscape (NL)	Constrained: Within the NL

Flood risk	N/a: Already ruled out (NL)
Biodiversity	N/a: Already ruled out (NL)
Irreplaceable habitat	N/a: Already ruled out (NL)
Local Green Space	N/a: Already ruled out (NL)
Historic environment	N/a: Already ruled out (NL)
NL setting	N/a: Already ruled out (NL)
Conclusion	Not grey belt due to footnote 7 constraint (NL)

Site FH013-b

Site Details

Reference	FH013-b
Settlement	Flackwell Heath (town)
Conclusion	Provisional grey belt



Map data © Copyright Buckinghamshire Council (2025) Licence No. 0100062456. Imagery source (imagery used 2025 (note- image source does not state the date the image was taken): Earthstar Geographics, Esri UK, Esri, TomTom, Garmin, FAO, NOAA, USGS, Esri UK, Esri, TomTom, Garmin, GeoTechnologies, Inc, METI/NASA, USGS.

Assessment

Purpose A	None: No notable contribution
Purpose B	Weak: The AA comprises a substantial part of the gap between Flackwell Heath and High Wycombe but makes very limited contribution to appreciation of the gap. The AA comprise built form.
Purpose D	None: No notable contribution
National Landscape (NL)	Provisionally constrained: Partly within the NL (19%)

Flood risk	Unconstrained: No notable constraint
Biodiversity	Unconstrained: No notable constraint
Irreplaceable habitat	Unconstrained: No notable constraint
Local Green Space	Unconstrained: Not LGS
Historic environment	Unconstrained: No notable constraint
NL setting	Provisionally constrained: Partially intersects the NL and assessed as within the NL setting.
Conclusion	Provisional grey belt due to footnote 7 constraint (NL, NLS)

Site FH014

Site Details

Reference	FH014
Settlement	Flackwell Heath (town)
Conclusion	Provisional grey belt



Map data © Copyright Buckinghamshire Council (2025) Licence No. 0100062456. Imagery source (imagery used 2025 (note- image source does not state the date the image was taken): Earthstar Geographics, Esri UK, Esri, TomTom, Garmin, FAO, NOAA, USGS, Esri UK, Esri, TomTom, Garmin, GeoTechnologies, Inc, METI/NASA, USGS.

Assessment

Purpose A	None: No notable contribution
Purpose B	Weak: The AA comprises a substantial part of the gap between Flackwell Heath and High Wycombe but makes very limited contribution to appreciation of the gap. There is enclosure by a college.
Purpose D	None: No notable contribution
National Landscape (NL)	Unconstrained: Not within the NL

Flood risk	Unconstrained: No notable constraint
Biodiversity	Unconstrained: No notable constraint
Irreplaceable habitat	Provisionally constrained: 2% ancient woodland. Also adjacent to a small ancient woodland that is at risk of being enveloped by development and there could be implications for connectivity between ancient woodlands at a landscape scale.
Local Green Space	Unconstrained: Not LGS
Historic environment	Unconstrained: No notable constraint
NL setting	Provisionally constrained: 40m from the NL and assessed as within the NL setting.
Conclusion	Provisional grey belt due to footnote 7 constraint (IH, NLS)

Site FH015

Site Details

Reference	FH015
Settlement	Flackwell Heath (town)
Conclusion	Not grey belt



Map data © Copyright Buckinghamshire Council (2025) Licence No. 0100062456. Imagery source (imagery used 2025 (note- image source does not state the date the image was taken): Earthstar Geographics, Esri UK, Esri, TomTom, Garmin, FAO, NOAA, USGS, Esri UK, Esri, TomTom, Garmin, GeoTechnologies, Inc, METI/NASA, USGS.

Assessment

Purpose A	None: No notable contribution
Purpose B	Weak: The AA comprises a substantial part of the gap between Flackwell Heath and High Wycombe but makes very limited contribution to appreciation of the gap. The AA comprises a woodland marking the settlement edge, but a substantial gap would remain.
Purpose D	None: No notable contribution
National Landscape (NL)	Unconstrained: Not within the NL

Flood risk	Unconstrained: No notable constraint
Biodiversity	Unconstrained: No notable constraint
Irreplaceable habitat	Constrained: Comprises ancient woodland.
Local Green Space	Unconstrained: Not LGS
Historic environment	N/a: Already ruled out (IH)
NL setting	N/a: Already ruled out (IH)
Conclusion	Not grey belt due to footnote 7 constraint (IH)

Site FH016

Site Details

Reference	FH016
Settlement	Flackwell Heath (town)
Conclusion	Provisional grey belt



Assessment

Purpose A	None: No notable contribution
Purpose B	Moderate: The AA comprises a substantial part of the gap between Flackwell Heath and High Wycombe but makes limited contribution to appreciation of the gap. This is raised land visible from Spring Lane, and the Chiltern Way is also adjacent, but a substantial gap would remain and the M40 is a separating feature.
Purpose D	None: No notable contribution

National Landscape (NL)	Unconstrained: Not within the NL
Flood risk	Unconstrained: No notable constraint
Biodiversity	Unconstrained: No notable constraint
Irreplaceable habitat	Provisionally constrained: Adjacent to two ancient woodlands and there could be implications for connectivity between ancient woodlands at a landscape scale.
Local Green Space	Unconstrained: Not LGS
Historic environment	Unconstrained: No notable constraint
NL setting	Unconstrained: 100-200m from the NL and considered unlikely to fall within the NL setting (not assessed in detail).
Conclusion	Provisional grey belt due to footnote 7 constraint (IH)

Site GK001

Site Details

Reference	GK001
Settlement	Great Kingshill (village)
Conclusion	Not grey belt



Map data © Copyright Buckinghamshire Council (2025) Licence No. 0100062456. Imagery source (imagery used 2025 (note- image source does not state the date the image was taken): Earthstar Geographics, Esri UK, Esri, TomTom, Garmin, FAO, NOAA, USGS, Esri UK, Esri, TomTom, Garmin, GeoTechnologies, Inc, METI/NASA, USGS.

Assessment

Purpose A	None: No notable contribution
Purpose B	None: No notable contribution.
Purpose D	None: No notable contribution
National Landscape (NL)	Constrained: Within the NL
Flood risk	N/a: Already ruled out (NL)

Biodiversity	N/a: Already ruled out (NL)
Irreplaceable habitat	N/a: Already ruled out (NL)
Local Green Space	N/a: Already ruled out (NL)
Historic environment	N/a: Already ruled out (NL)
NL setting	N/a: Already ruled out (NL)
Conclusion	Not grey belt due to footnote 7 constraint (NL)

Site GK002

Site Details

Reference	GK002
Settlement	Great Kingshill (village)
Conclusion	Not grey belt



Map data © Copyright Buckinghamshire Council (2025) Licence No. 0100062456. Imagery source (imagery used 2025 (note- image source does not state the date the image was taken): Earthstar Geographics, Esri UK, Esri, TomTom, Garmin, FAO, NOAA, USGS, Esri UK, Esri, TomTom, Garmin, GeoTechnologies, Inc, METI/NASA, USGS.

Assessment

Purpose A	None: No notable contribution
Purpose B	None: No notable contribution.
Purpose D	None: No notable contribution
National Landscape (NL)	Constrained: Within the NL
Flood risk	N/a: Already ruled out (NL)

Biodiversity	N/a: Already ruled out (NL)
Irreplaceable habitat	N/a: Already ruled out (NL)
Local Green Space	N/a: Already ruled out (NL)
Historic environment	N/a: Already ruled out (NL)
NL setting	N/a: Already ruled out (NL)
Conclusion	Not grey belt due to footnote 7 constraint (NL)

Site GK003

Site Details

Reference	GK003
Settlement	Great Kingshill (village)
Conclusion	Not grey belt



Map data © Copyright Buckinghamshire Council (2025) Licence No. 0100062456. Imagery source (imagery used 2025 (note- image source does not state the date the image was taken): Earthstar Geographics, Esri UK, Esri, TomTom, Garmin, FAO, NOAA, USGS, Esri UK, Esri, TomTom, Garmin, GeoTechnologies, Inc, METI/NASA, USGS.

Assessment

Purpose A	None: No notable contribution
Purpose B	None: No notable contribution.
Purpose D	None: No notable contribution
National Landscape (NL)	Constrained: Within the NL
Flood risk	N/a: Already ruled out (NL)

Biodiversity	N/a: Already ruled out (NL)
Irreplaceable habitat	N/a: Already ruled out (NL)
Local Green Space	N/a: Already ruled out (NL)
Historic environment	N/a: Already ruled out (NL)
NL setting	N/a: Already ruled out (NL)
Conclusion	Not grey belt due to footnote 7 constraint (NL)

Site GK004

Site Details

Reference	GK004
Settlement	Great Kingshill (village)
Conclusion	Not grey belt



Map data © Copyright Buckinghamshire Council (2025) Licence No. 0100062456. Imagery source (imagery used 2025 (note- image source does not state the date the image was taken): Earthstar Geographics, Esri UK, Esri, TomTom, Garmin, FAO, NOAA, USGS, Esri UK, Esri, TomTom, Garmin, GeoTechnologies, Inc, METI/NASA, USGS.

Assessment

Purpose A	None: No notable contribution
Purpose B	None: No notable contribution.
Purpose D	None: No notable contribution
National Landscape (NL)	Constrained: Within the NL
Flood risk	N/a: Already ruled out (NL)

Biodiversity	N/a: Already ruled out (NL)
Irreplaceable habitat	N/a: Already ruled out (NL)
Local Green Space	N/a: Already ruled out (NL)
Historic environment	N/a: Already ruled out (NL)
NL setting	N/a: Already ruled out (NL)
Conclusion	Not grey belt due to footnote 7 constraint (NL)

Site GK005

Site Details

Reference	GK005
Settlement	Great Kingshill (village)
Conclusion	Not grey belt



Map data © Copyright Buckinghamshire Council (2025) Licence No. 0100062456. Imagery source (imagery used 2025 (note- image source does not state the date the image was taken): Earthstar Geographics, Esri UK, Esri, TomTom, Garmin, FAO, NOAA, USGS, Esri UK, Esri, TomTom, Garmin, GeoTechnologies, Inc, METI/NASA, USGS.

Assessment

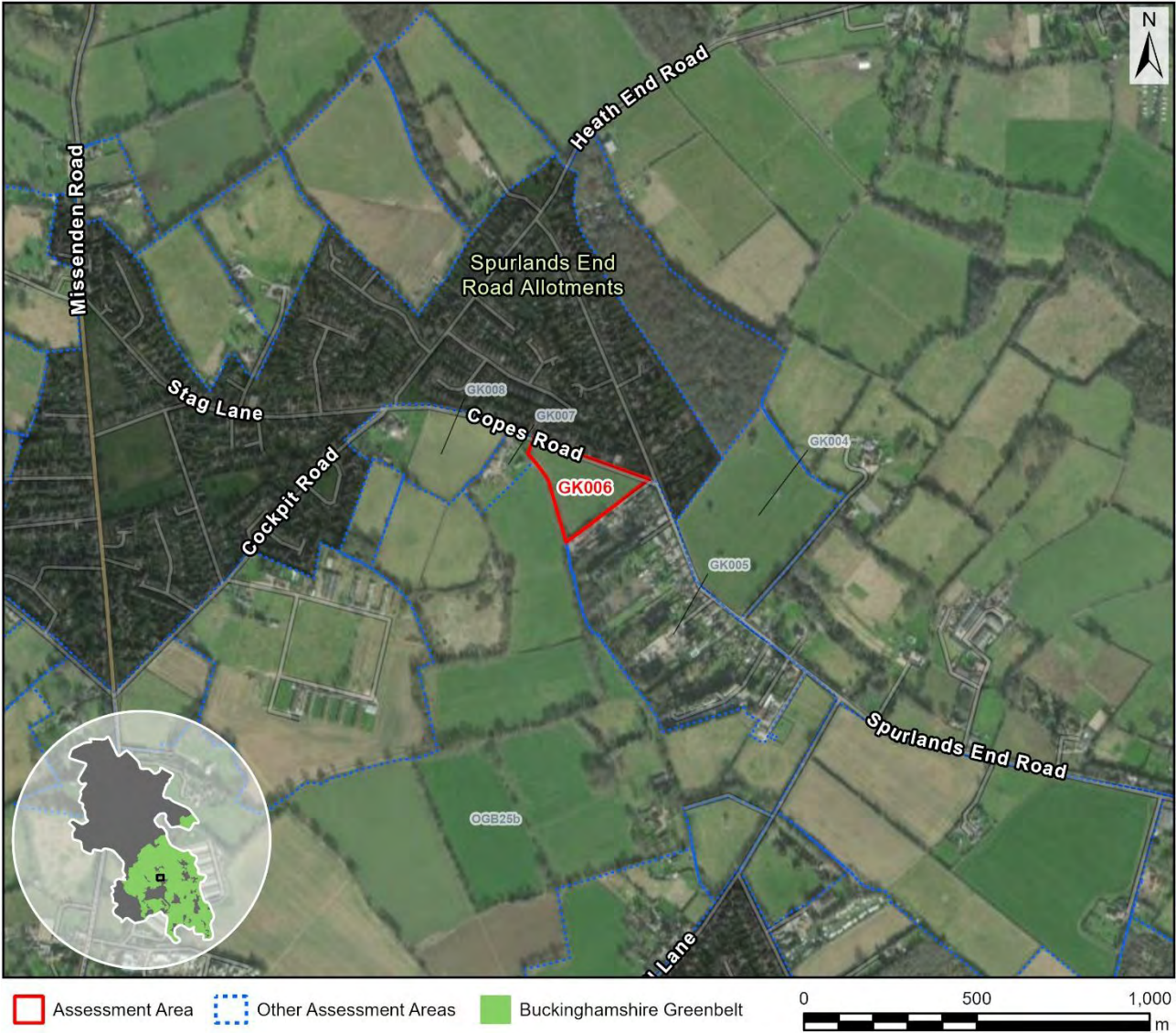
Purpose A	None: No notable contribution
Purpose B	None: No notable contribution.
Purpose D	None: No notable contribution
National Landscape (NL)	Constrained: Within the NL
Flood risk	N/a: Already ruled out (NL)

Biodiversity	N/a: Already ruled out (NL)
Irreplaceable habitat	N/a: Already ruled out (NL)
Local Green Space	N/a: Already ruled out (NL)
Historic environment	N/a: Already ruled out (NL)
NL setting	N/a: Already ruled out (NL)
Conclusion	Not grey belt due to footnote 7 constraint (NL)

Site GK006

Site Details

Reference	GK006
Settlement	Great Kingshill (village)
Conclusion	Not grey belt



Map data © Copyright Buckinghamshire Council (2025) Licence No. 0100062456. Imagery source (imagery used 2025 (note- image source does not state the date the image was taken): Earthstar Geographics, Esri UK, Esri, TomTom, Garmin, FAO, NOAA, USGS, Esri UK, Esri, TomTom, Garmin, GeoTechnologies, Inc, METI/NASA, USGS.

Assessment

Purpose A	None: No notable contribution
Purpose B	None: No notable contribution.
Purpose D	None: No notable contribution
National Landscape (NL)	Constrained: Within the NL
Flood risk	N/a: Already ruled out (NL)

Biodiversity	N/a: Already ruled out (NL)
Irreplaceable habitat	N/a: Already ruled out (NL)
Local Green Space	N/a: Already ruled out (NL)
Historic environment	N/a: Already ruled out (NL)
NL setting	N/a: Already ruled out (NL)
Conclusion	Not grey belt due to footnote 7 constraint (NL)

Site GK007

Site Details

Reference	GK007
Settlement	Great Kingshill (village)
Conclusion	Not grey belt



Map data © Copyright Buckinghamshire Council (2025) Licence No. 0100062456. Imagery source (imagery used 2025 (note- image source does not state the date the image was taken): Earthstar Geographics, Esri UK, Esri, TomTom, Garmin, FAO, NOAA, USGS, Esri UK, Esri, TomTom, Garmin, GeoTechnologies, Inc, METI/NASA, USGS.

Assessment

Purpose A	None: No notable contribution
Purpose B	None: No notable contribution.
Purpose D	None: No notable contribution
National Landscape (NL)	Constrained: Within the NL
Flood risk	N/a: Already ruled out (NL)

Biodiversity	N/a: Already ruled out (NL)
Irreplaceable habitat	N/a: Already ruled out (NL)
Local Green Space	N/a: Already ruled out (NL)
Historic environment	N/a: Already ruled out (NL)
NL setting	N/a: Already ruled out (NL)
Conclusion	Not grey belt due to footnote 7 constraint (NL)

Site GK008

Site Details

Reference	GK008
Settlement	Great Kingshill (village)
Conclusion	Not grey belt



Map data © Copyright Buckinghamshire Council (2025) Licence No. 0100062456. Imagery source (imagery used 2025 (note- image source does not state the date the image was taken): Earthstar Geographics, Esri UK, Esri, TomTom, Garmin, FAO, NOAA, USGS, Esri UK, Esri, TomTom, Garmin, GeoTechnologies, Inc, METI/NASA, USGS.

Assessment

Purpose A	None: No notable contribution
Purpose B	None: No notable contribution.
Purpose D	None: No notable contribution
National Landscape (NL)	Constrained: Within the NL
Flood risk	N/a: Already ruled out (NL)

Biodiversity	N/a: Already ruled out (NL)
Irreplaceable habitat	N/a: Already ruled out (NL)
Local Green Space	N/a: Already ruled out (NL)
Historic environment	N/a: Already ruled out (NL)
NL setting	N/a: Already ruled out (NL)
Conclusion	Not grey belt due to footnote 7 constraint (NL)

Site GK009

Site Details

Reference	GK009
Settlement	Great Kingshill (village)
Conclusion	Not grey belt



Map data © Copyright Buckinghamshire Council (2025) Licence No. 0100062456. Imagery source (imagery used 2025 (note- image source does not state the date the image was taken): Earthstar Geographics, Esri UK, Esri, TomTom, Garmin, FAO, NOAA, USGS, Esri UK, Esri, TomTom, Garmin, GeoTechnologies, Inc, METI/NASA, USGS.

Assessment

Purpose A	None: No notable contribution
Purpose B	None: No notable contribution.
Purpose D	None: No notable contribution
National Landscape (NL)	Constrained: Within the NL
Flood risk	N/a: Already ruled out (NL)

Biodiversity	N/a: Already ruled out (NL)
Irreplaceable habitat	N/a: Already ruled out (NL)
Local Green Space	N/a: Already ruled out (NL)
Historic environment	N/a: Already ruled out (NL)
NL setting	N/a: Already ruled out (NL)
Conclusion	Not grey belt due to footnote 7 constraint (NL)

Site GK010

Site Details

Reference	GK010
Settlement	Great Kingshill (village)
Conclusion	Not grey belt



Map data © Copyright Buckinghamshire Council (2025) Licence No. 0100062456. Imagery source (imagery used 2025 (note- image source does not state the date the image was taken): Earthstar Geographics, Esri UK, Esri, TomTom, Garmin, FAO, NOAA, USGS, Esri UK, Esri, TomTom, Garmin, GeoTechnologies, Inc, METI/NASA, USGS.

Assessment

Purpose A	None: No notable contribution
Purpose B	None: No notable contribution.
Purpose D	None: No notable contribution
National Landscape (NL)	Constrained: Within the NL
Flood risk	N/a: Already ruled out (NL)

Biodiversity	N/a: Already ruled out (NL)
Irreplaceable habitat	N/a: Already ruled out (NL)
Local Green Space	N/a: Already ruled out (NL)
Historic environment	N/a: Already ruled out (NL)
NL setting	N/a: Already ruled out (NL)
Conclusion	Not grey belt due to footnote 7 constraint (NL)

Site GK011

Site Details

Reference	GK011
Settlement	Great Kingshill (village)
Conclusion	Not grey belt



Map data © Copyright Buckinghamshire Council (2025) Licence No. 0100062456. Imagery source (imagery used 2025 (note- image source does not state the date the image was taken): Earthstar Geographics, Esri UK, Esri, TomTom, Garmin, FAO, NOAA, USGS, Esri UK, Esri, TomTom, Garmin, GeoTechnologies, Inc, METI/NASA, USGS.

Assessment

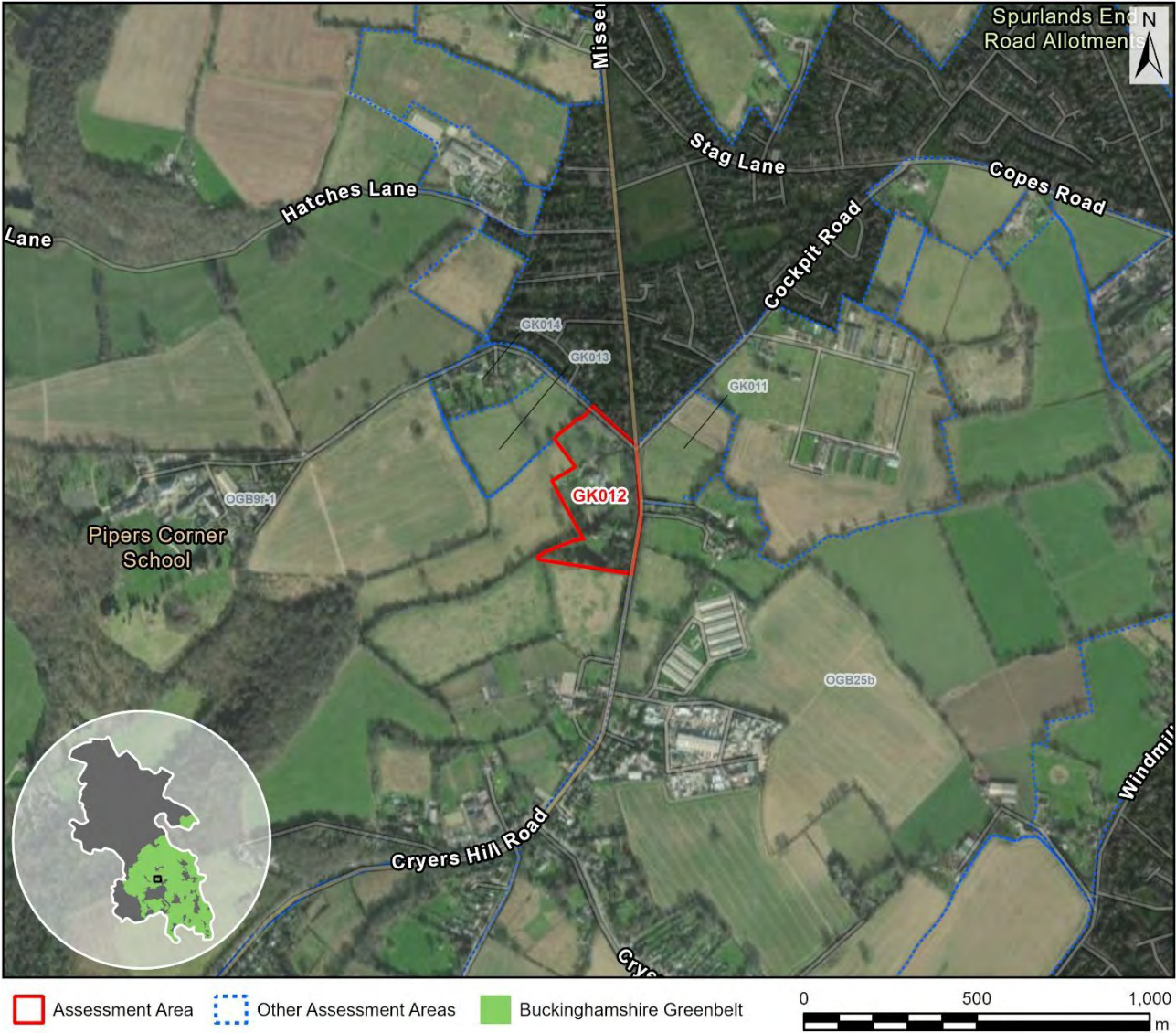
Purpose A	None: No notable contribution
Purpose B	None: No notable contribution.
Purpose D	None: No notable contribution
National Landscape (NL)	Constrained: Within the NL
Flood risk	N/a: Already ruled out (NL)

Biodiversity	N/a: Already ruled out (NL)
Irreplaceable habitat	N/a: Already ruled out (NL)
Local Green Space	N/a: Already ruled out (NL)
Historic environment	N/a: Already ruled out (NL)
NL setting	N/a: Already ruled out (NL)
Conclusion	Not grey belt due to footnote 7 constraint (NL)

Site GK012

Site Details

Reference	GK012
Settlement	Great Kingshill (village)
Conclusion	Not grey belt



Map data © Copyright Buckinghamshire Council (2025) Licence No. 0100062456. Imagery source (imagery used 2025 (note- image source does not state the date the image was taken): Earthstar Geographics, Esri UK, Esri, TomTom, Garmin, FAO, NOAA, USGS, Esri UK, Esri, TomTom, Garmin, GeoTechnologies, Inc, METI/NASA, USGS.

Assessment

Purpose A	None: No notable contribution
Purpose B	None: No notable contribution.
Purpose D	None: No notable contribution
National Landscape (NL)	Constrained: Within the NL
Flood risk	N/a: Already ruled out (NL)

Biodiversity	N/a: Already ruled out (NL)
Irreplaceable habitat	N/a: Already ruled out (NL)
Local Green Space	N/a: Already ruled out (NL)
Historic environment	N/a: Already ruled out (NL)
NL setting	N/a: Already ruled out (NL)
Conclusion	Not grey belt due to footnote 7 constraint (NL)

Site GK013

Site Details

Reference	GK013
Settlement	Great Kingshill (village)
Conclusion	Not grey belt



Map data © Copyright Buckinghamshire Council (2025) Licence No. 0100062456. Imagery source (imagery used 2025 (note- image source does not state the date the image was taken): Earthstar Geographics, Esri UK, Esri, TomTom, Garmin, FAO, NOAA, USGS, Esri UK, Esri, TomTom, Garmin, GeoTechnologies, Inc, METI/NASA, USGS.

Assessment

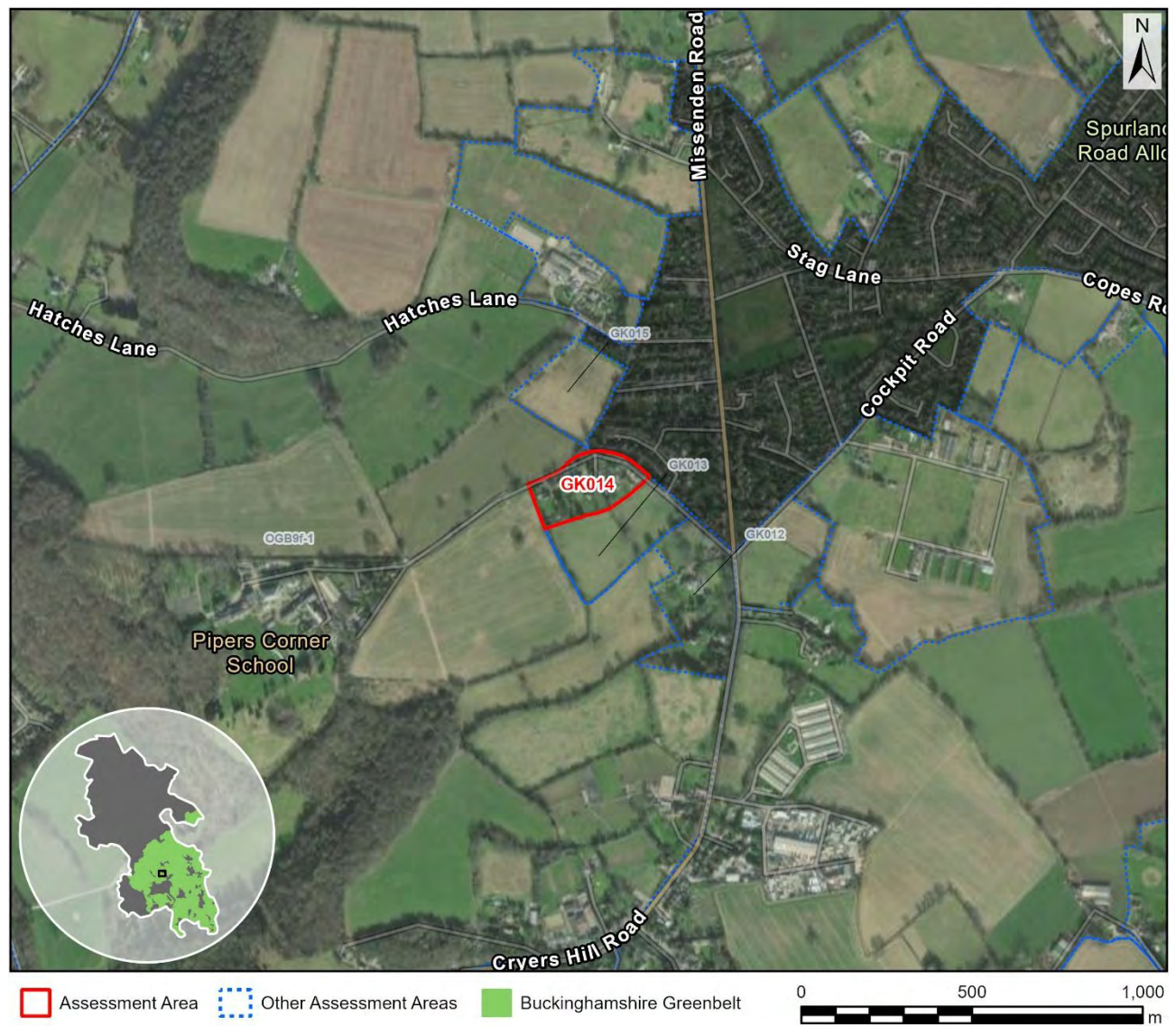
Purpose A	None: No notable contribution
Purpose B	None: No notable contribution.
Purpose D	None: No notable contribution
National Landscape (NL)	Constrained: Within the NL
Flood risk	N/a: Already ruled out (NL)

Biodiversity	N/a: Already ruled out (NL)
Irreplaceable habitat	N/a: Already ruled out (NL)
Local Green Space	N/a: Already ruled out (NL)
Historic environment	N/a: Already ruled out (NL)
NL setting	N/a: Already ruled out (NL)
Conclusion	Not grey belt due to footnote 7 constraint (NL)

Site GK014

Site Details

Reference	GK014
Settlement	Great Kingshill (village)
Conclusion	Not grey belt



Map data © Copyright Buckinghamshire Council (2025) Licence No. 0100062456. Imagery source (imagery used 2025 (note- image source does not state the date the image was taken): Earthstar Geographics, Esri UK, Esri, TomTom, Garmin, FAO, NOAA, USGS, Esri UK, Esri, TomTom, Garmin, GeoTechnologies, Inc, METI/NASA, USGS.

Assessment

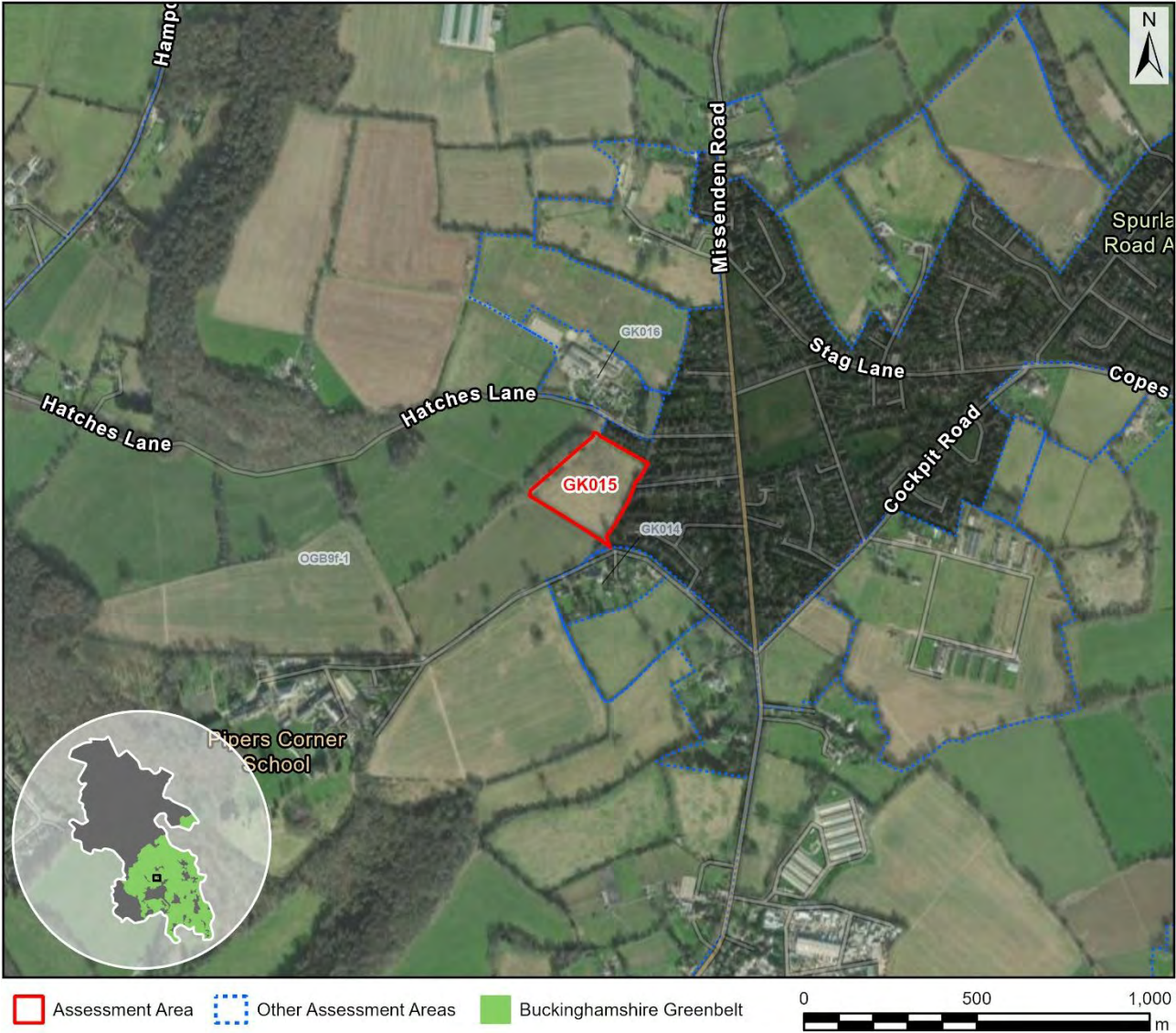
Purpose A	None: No notable contribution
Purpose B	None: No notable contribution.
Purpose D	None: No notable contribution
National Landscape (NL)	Constrained: Within the NL
Flood risk	N/a: Already ruled out (NL)

Biodiversity	N/a: Already ruled out (NL)
Irreplaceable habitat	N/a: Already ruled out (NL)
Local Green Space	N/a: Already ruled out (NL)
Historic environment	N/a: Already ruled out (NL)
NL setting	N/a: Already ruled out (NL)
Conclusion	Not grey belt due to footnote 7 constraint (NL)

Site GK015

Site Details

Reference	GK015
Settlement	Great Kingshill (village)
Conclusion	Not grey belt



Map data © Copyright Buckinghamshire Council (2025) Licence No. 0100062456. Imagery source (imagery used 2025 (note- image source does not state the date the image was taken): Earthstar Geographics, Esri UK, Esri, TomTom, Garmin, FAO, NOAA, USGS, Esri UK, Esri, TomTom, Garmin, GeoTechnologies, Inc, METI/NASA, USGS.

Assessment

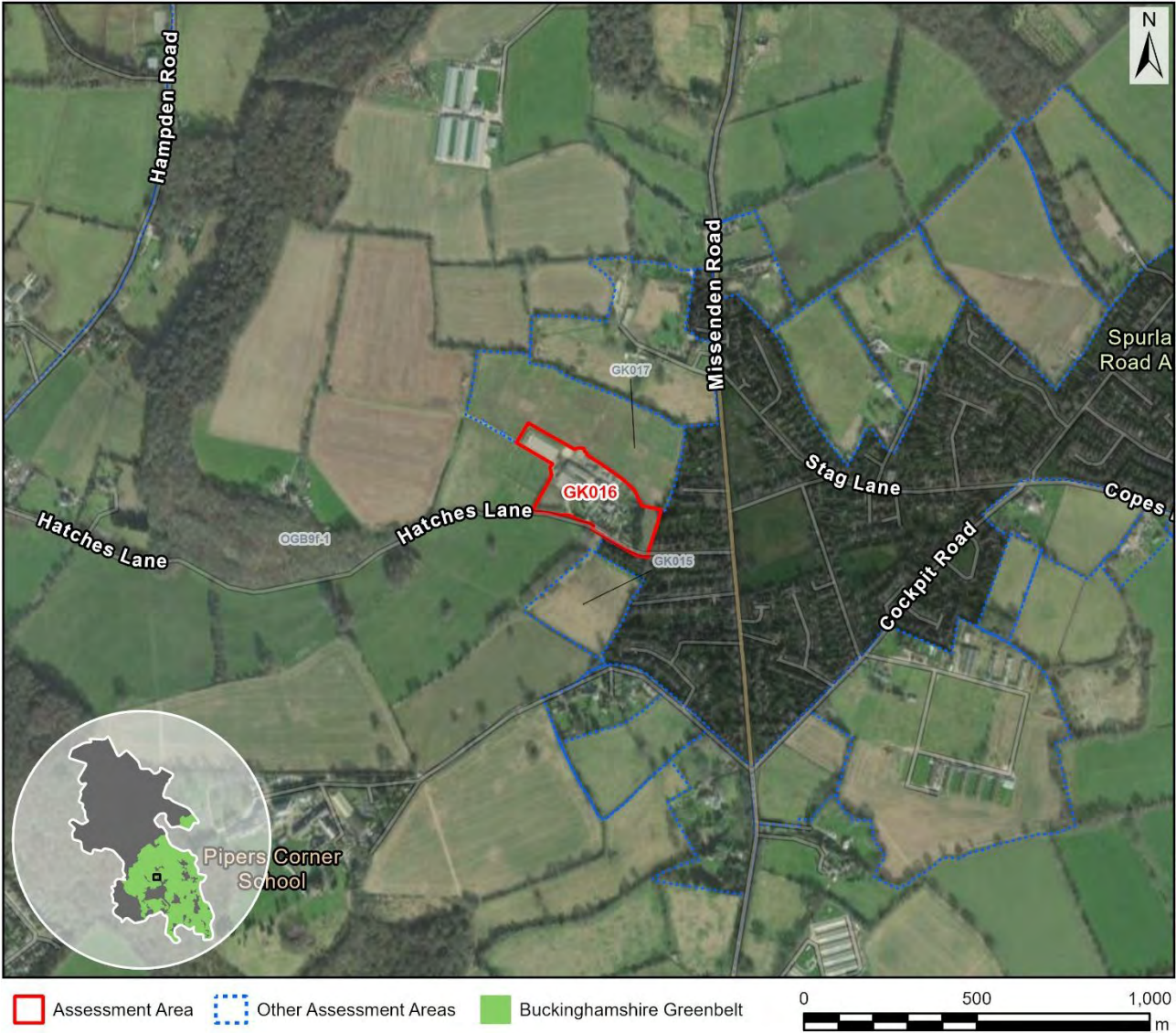
Purpose A	None: No notable contribution
Purpose B	None: No notable contribution.
Purpose D	None: No notable contribution
National Landscape (NL)	Constrained: Within the NL
Flood risk	N/a: Already ruled out (NL)

Biodiversity	N/a: Already ruled out (NL)
Irreplaceable habitat	N/a: Already ruled out (NL)
Local Green Space	N/a: Already ruled out (NL)
Historic environment	N/a: Already ruled out (NL)
NL setting	N/a: Already ruled out (NL)
Conclusion	Not grey belt due to footnote 7 constraint (NL)

Site GK016

Site Details

Reference	GK016
Settlement	Great Kingshill (village)
Conclusion	Not grey belt



Assessment

Purpose A	None: No notable contribution
Purpose B	None: No notable contribution.
Purpose D	None: No notable contribution
National Landscape (NL)	Constrained: Within the NL
Flood risk	N/a: Already ruled out (NL)

Biodiversity	N/a: Already ruled out (NL)
Irreplaceable habitat	N/a: Already ruled out (NL)
Local Green Space	N/a: Already ruled out (NL)
Historic environment	N/a: Already ruled out (NL)
NL setting	N/a: Already ruled out (NL)
Conclusion	Not grey belt due to footnote 7 constraint (NL)

Site GK017

Site Details

Reference	GK017
Settlement	Great Kingshill (village)
Conclusion	Not grey belt



Map data © Copyright Buckinghamshire Council (2025) Licence No. 0100062456. Imagery source (imagery used 2025 (note- image source does not state the date the image was taken): Earthstar Geographics, Esri UK, Esri, TomTom, Garmin, FAO, NOAA, USGS, Esri UK, Esri, TomTom, Garmin, GeoTechnologies, Inc, METI/NASA, USGS.

Assessment

Purpose A	None: No notable contribution
Purpose B	None: No notable contribution.
Purpose D	None: No notable contribution
National Landscape (NL)	Constrained: Within the NL
Flood risk	N/a: Already ruled out (NL)

Biodiversity	N/a: Already ruled out (NL)
Irreplaceable habitat	N/a: Already ruled out (NL)
Local Green Space	N/a: Already ruled out (NL)
Historic environment	N/a: Already ruled out (NL)
NL setting	N/a: Already ruled out (NL)
Conclusion	Not grey belt due to footnote 7 constraint (NL)

Site GK018

Site Details

Reference	GK018
Settlement	Great Kingshill (village)
Conclusion	Not grey belt



Map data © Copyright Buckinghamshire Council (2025) Licence No. 0100062456. Imagery source (imagery used 2025 (note- image source does not state the date the image was taken): Earthstar Geographics, Esri UK, Esri, TomTom, Garmin, FAO, NOAA, USGS, Esri UK, Esri, TomTom, Garmin, GeoTechnologies, Inc, METI/NASA, USGS.

Assessment

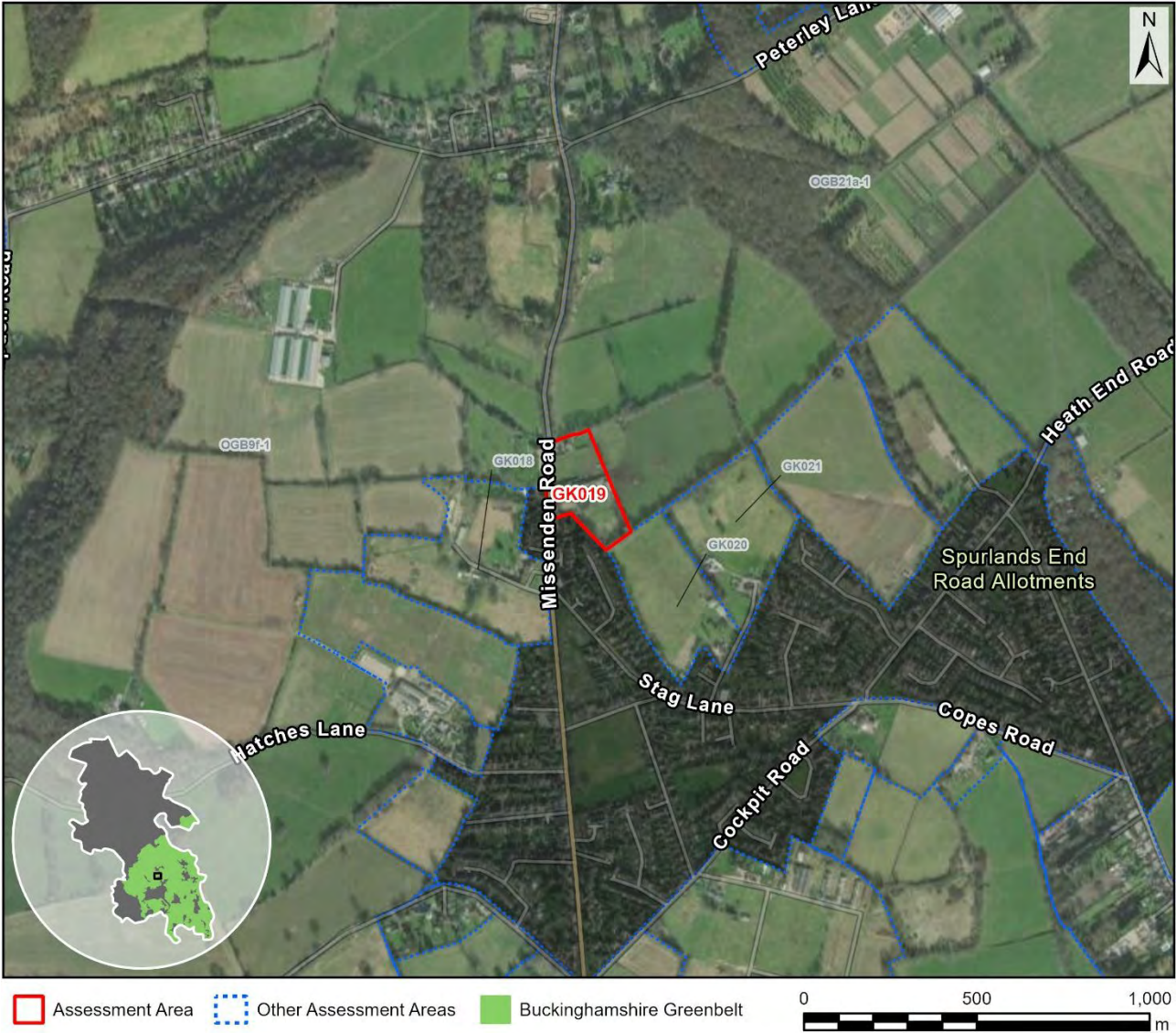
Purpose A	None: No notable contribution
Purpose B	None: No notable contribution.
Purpose D	None: No notable contribution
National Landscape (NL)	Constrained: Within the NL
Flood risk	N/a: Already ruled out (NL)

Biodiversity	N/a: Already ruled out (NL)
Irreplaceable habitat	N/a: Already ruled out (NL)
Local Green Space	N/a: Already ruled out (NL)
Historic environment	N/a: Already ruled out (NL)
NL setting	N/a: Already ruled out (NL)
Conclusion	Not grey belt due to footnote 7 constraint (NL)

Site GK019

Site Details

Reference	GK019
Settlement	Great Kingshill (village)
Conclusion	Not grey belt



Map data © Copyright Buckinghamshire Council (2025) Licence No. 0100062456. Imagery source (imagery used 2025 (note- image source does not state the date the image was taken): Earthstar Geographics, Esri UK, Esri, TomTom, Garmin, FAO, NOAA, USGS, Esri UK, Esri, TomTom, Garmin, GeoTechnologies, Inc, METI/NASA, USGS.

Assessment

Purpose A	None: No notable contribution
Purpose B	None: No notable contribution.
Purpose D	None: No notable contribution
National Landscape (NL)	Constrained: Within the NL
Flood risk	N/a: Already ruled out (NL)

Biodiversity	N/a: Already ruled out (NL)
Irreplaceable habitat	N/a: Already ruled out (NL)
Local Green Space	N/a: Already ruled out (NL)
Historic environment	N/a: Already ruled out (NL)
NL setting	N/a: Already ruled out (NL)
Conclusion	Not grey belt due to footnote 7 constraint (NL)

Site GK020

Site Details

Reference	GK020
Settlement	Great Kingshill (village)
Conclusion	Not grey belt



Map data © Copyright Buckinghamshire Council (2025) Licence No. 0100062456. Imagery source (imagery used 2025 (note- image source does not state the date the image was taken): Earthstar Geographics, Esri UK, Esri, TomTom, Garmin, FAO, NOAA, USGS, Esri UK, Esri, TomTom, Garmin, GeoTechnologies, Inc, METI/NASA, USGS.

Assessment

Purpose A	None: No notable contribution
Purpose B	None: No notable contribution.
Purpose D	None: No notable contribution
National Landscape (NL)	Constrained: Within the NL
Flood risk	N/a: Already ruled out (NL)

Biodiversity	N/a: Already ruled out (NL)
Irreplaceable habitat	N/a: Already ruled out (NL)
Local Green Space	N/a: Already ruled out (NL)
Historic environment	N/a: Already ruled out (NL)
NL setting	N/a: Already ruled out (NL)
Conclusion	Not grey belt due to footnote 7 constraint (NL)

Site GK021

Site Details

Reference	GK021
Settlement	Great Kingshill (village)
Conclusion	Not grey belt



Map data © Copyright Buckinghamshire Council (2025) Licence No. 0100062456. Imagery source (imagery used 2025 (note- image source does not state the date the image was taken): Earthstar Geographics, Esri UK, Esri, TomTom, Garmin, FAO, NOAA, USGS, Esri UK, Esri, TomTom, Garmin, GeoTechnologies, Inc, METI/NASA, USGS.

Assessment

Purpose A	None: No notable contribution
Purpose B	None: No notable contribution.
Purpose D	None: No notable contribution
National Landscape (NL)	Constrained: Within the NL
Flood risk	N/a: Already ruled out (NL)

Biodiversity	N/a: Already ruled out (NL)
Irreplaceable habitat	N/a: Already ruled out (NL)
Local Green Space	N/a: Already ruled out (NL)
Historic environment	N/a: Already ruled out (NL)
NL setting	N/a: Already ruled out (NL)
Conclusion	Not grey belt due to footnote 7 constraint (NL)